

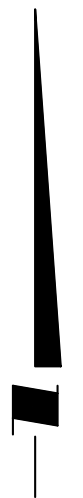
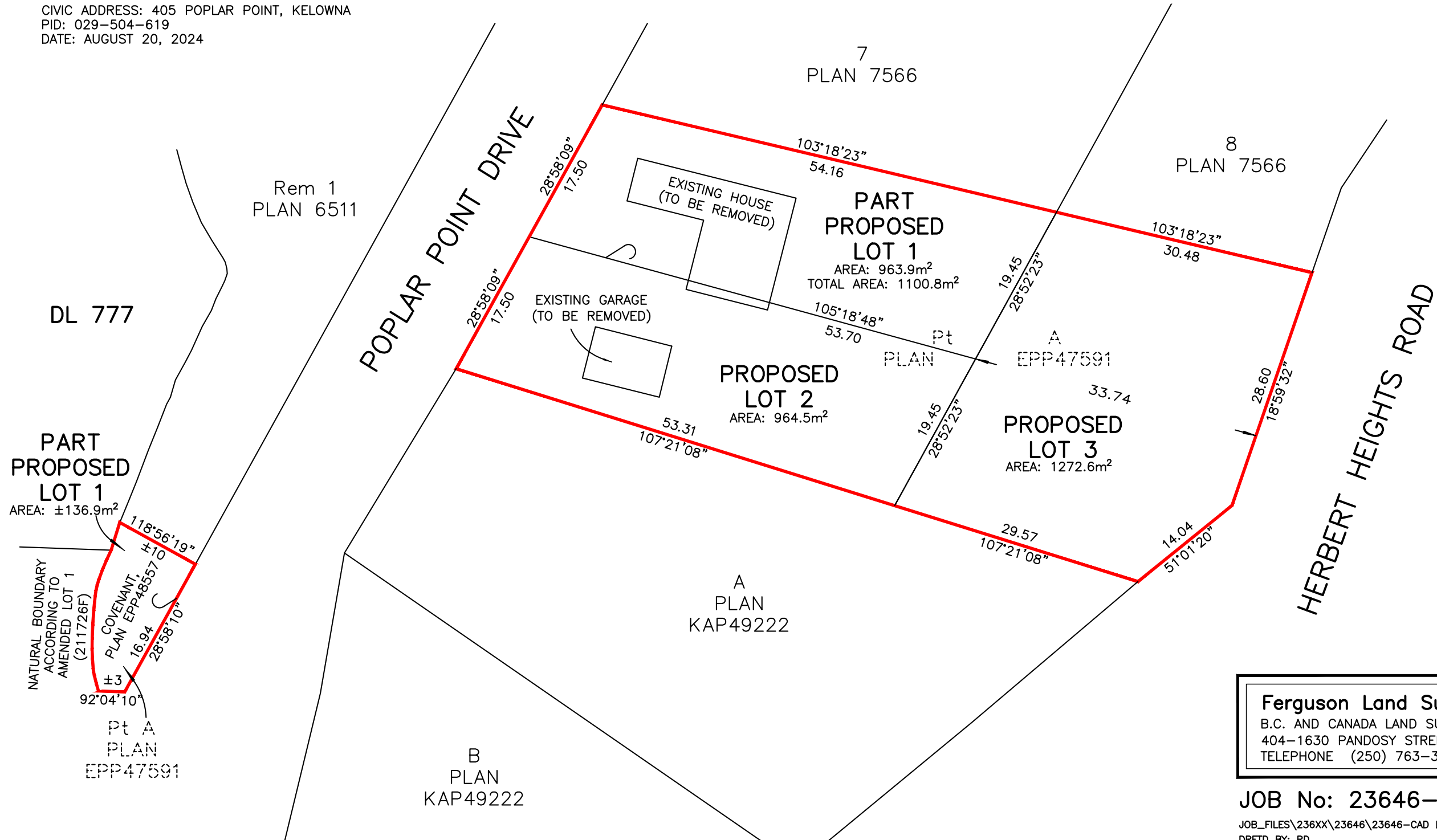
PROPOSED SUBDIVISION PLAN OF LOT A DISTRICT LOT 219 OSOYOOS DIVISION YALE DISTRICT PLAN EPP47591

BCGS 82E.083



THE INTENDED PLOT SIZE OF THIS PLAN IS 432mm IN WIDTH BY 280mm IN HEIGHT (B SIZE) WHEN PLOTTED AT A SCALE OF 1:500

CIVIC ADDRESS: 405 POPLAR POINT, KELOWNA
PID: 029-504-619
DATE: AUGUST 20, 2024



Ferguson Land Surveying & Geomatics Ltd.
B.C. AND CANADA LAND SURVEYORS
404-1630 PANDOSY STREET, KELOWNA, B.C.
TELEPHONE (250) 763-3115 FAX (250) 763-0321

JOB No: 23646-PROP SUB

JOB_FILES\236XX\23646\23646-CAD DRAWINGS\23646-PROP SUB.DWG
DRFTD BY: RD